



Appendix H

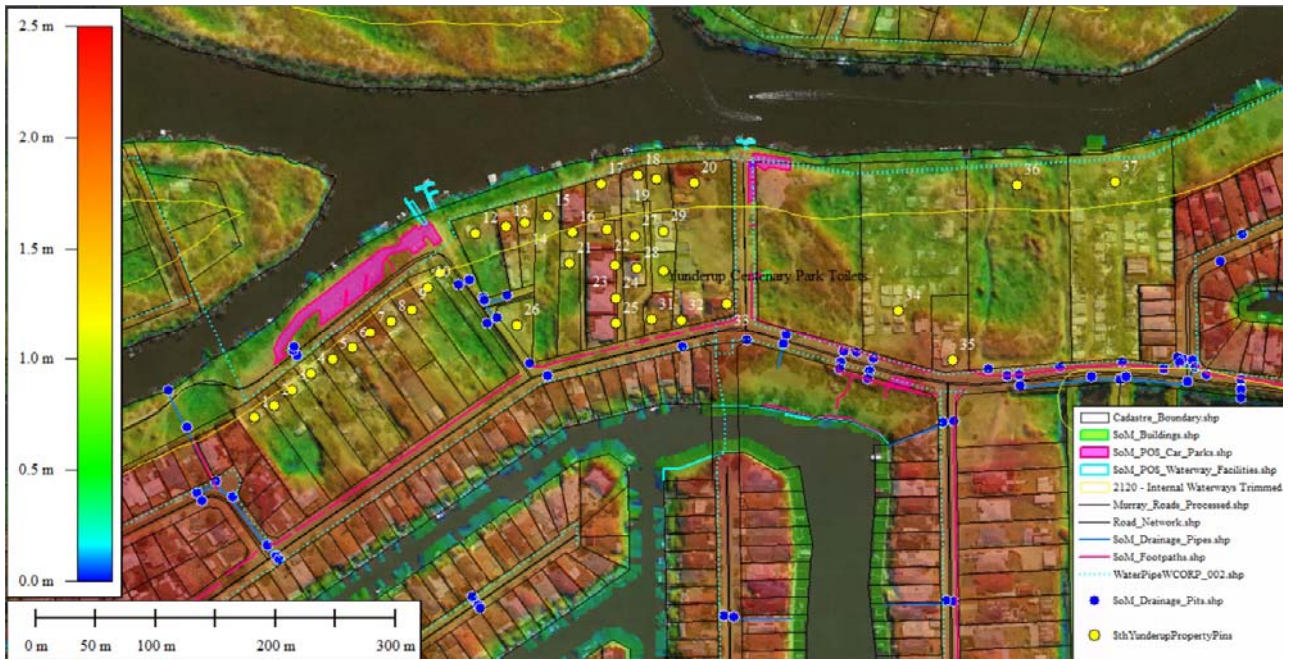
Hazard Impact Regions

Baird.

H.1 Hazard Region Calculated for Inundation and Erosion

Baird.

South Yunderup





Calculated Erosion Areas for South Yunderup RiverFront Properties

ASSUMPTIONS

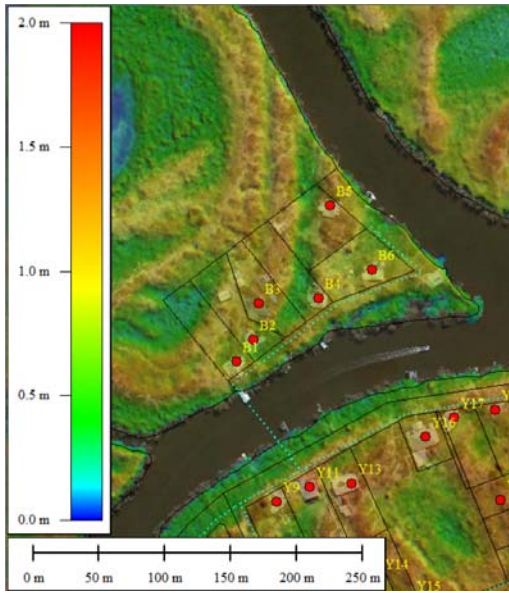
Estimate of the lot area .

Erosion areas do not consider erosion of house a total loss of area (approach adopted at the Islands)

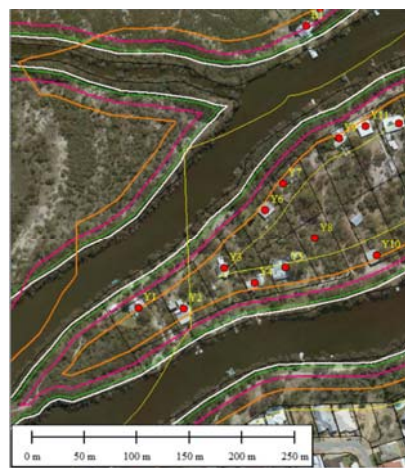
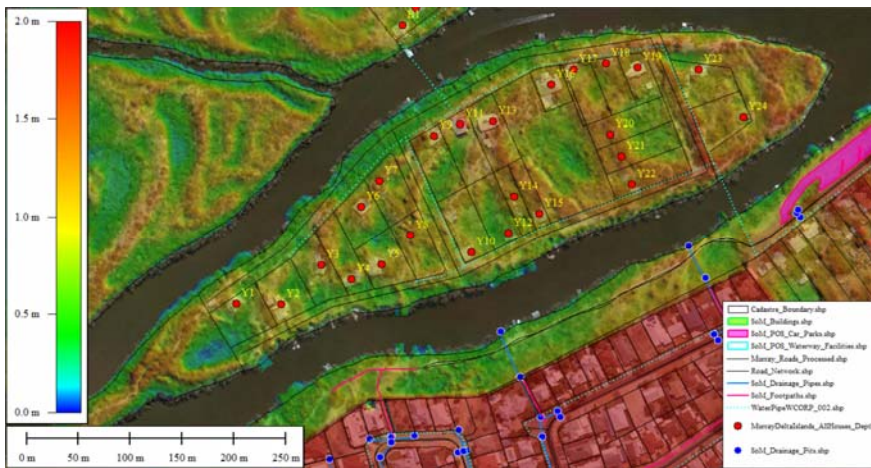
Elevation Calculated from LiDAR Data			Area of the Lot Which is lost to Erosion (m2)					% of the Total Lot Which is lost to Erosion					
Location	Property Pin	Lot Size (m2)	2120	2130	2150	2170	2120	2120	2130	2150	2170	2120	
South Yunderup Riverfront Properties	1	2627	0	0	0	0	160	0%	0%	0%	0%	6%	
	2	2198	0	0	0	0	160	0%	0%	0%	0%	7%	
	3	2225	0	0	0	0	155	0%	0%	0%	0%	7%	
	4	2249	0	0	0	0	145	0%	0%	0%	0%	6%	
	5	2300	0	0	0	0	165	0%	0%	0%	0%	7%	
	6	2225	0	0	0	0	160	0%	0%	0%	0%	7%	
	7	2326	0	0	0	0	155	0%	0%	0%	0%	7%	
	8	1351	0	0	0	0	155	0%	0%	0%	0%	11%	
	9	2376	0	0	0	0	155	0%	0%	0%	0%	7%	
	10	2359	0	0	0	0	166	0%	0%	0%	0%	7%	
	11	1191	0	0	0	0	72	0%	0%	0%	0%	6%	
	12	2096	0	0	230	630	1230	0%	0%	11%	30%	59%	
	13	1007	0	0	60	260	580	0%	0%	6%	26%	58%	
	14	1005	0	0	60	260	580	0%	0%	6%	26%	58%	
	15	2943	0	0	44	314	772	0%	0%	1%	11%	26%	
	16	1599	0	0	40	270	780	0%	0%	3%	17%	49%	
	17	973	0	0	112	337	973	0%	0%	12%	35%	100%	
	18	786	0	0	160	390	786	0%	0%	20%	50%	100%	
	19	793	0	0	80	370	793	0%	0%	10%	47%	100%	
	20	6759	0	0	370	1024	2061	0%	0%	5%	15%	30%	
	21												
	22												
	23												
	24												
	25												
	26												
	27												
	28												
	29												
	30												
	31												
	32												
	33												
	34	13270	0	295	1060	2117	3800	0%	2%	8%	16%	29%	
	35												
	36	15273	0	295	1060	2117	3800	0%	2%	7%	14%	25%	
	37	13724	0	295	1060	2117	3800	0%	2%	8%	15%	28%	
	38	1869	0	0	0	150	390	0%	0%	0%	8%	21%	
	39	1763	0	0	0	140	370	0%	0%	0%	8%	21%	
	40	1656	0	0	0	120	340	0%	0%	0%	7%	21%	
	41	1550	0	0	0	110	335	0%	0%	0%	7%	22%	
	42	1495	0	0	0	105	360	0%	0%	0%	7%	24%	
	43	1495	0	0	0	105	340	0%	0%	0%	7%	23%	
	44	748	0	0	0	110	340	0%	0%	0%	15%	45%	
	45												
	46	3018	0	0	0	140	600	0%	0%	0%	5%	20%	
	47	1549	0	0	0	69	300	0%	0%	0%	4%	19%	
	48	1567	0	0	0	70	310	0%	0%	0%	4%	20%	
	49	1585	0	0	0	75	290	0%	0%	0%	5%	18%	
	50	1524	0	0	0	70	300	0%	0%	0%	5%	20%	
	51	1386	0	0	0	75	305	0%	0%	0%	5%	22%	
	52	1248	0	0	0	54	300	0%	0%	0%	4%	24%	
	53	1532	0	0	0	30	300	0%	0%	0%	2%	20%	
	54	1651	0	0	0	0	300	0%	0%	0%	0%	18%	
	55	3389	0	0	0	70	310	0%	0%	0%	2%	9%	
	56	1616	0	0	0	20	240	0%	0%	0%	1%	15%	
	57	1616	0	0	0	65	240	0%	0%	0%	4%	15%	
	58	1617	0	0	0	70	240	0%	0%	0%	4%	15%	
	59	1617	0	0	0	145	375	0%	0%	0%	9%	23%	
	60	1617	0	0	0	145	375	0%	0%	0%	9%	23%	
	61	1617	0	0	0	145	375	0%	0%	0%	9%	23%	
	62	1617	0	0	0	145	375	0%	0%	0%	9%	23%	

63	1617	0	0	0	145	375	0%	0%	0%	9%	23%
64	1617	0	0	0	145	375	0%	0%	0%	9%	23%
65	1617	0	0	0	145	375	0%	0%	0%	9%	23%
66	1617	0	0	0	145	375	0%	0%	0%	9%	23%
67	1617	0	0	0	145	375	0%	0%	0%	9%	23%
68	808	0	0	0	55	90	0%	0%	0%	7%	11%
69	808	0	0	0	55	90	0%	0%	0%	7%	11%
70	1681	0	0	0	90	315	0%	0%	0%	5%	19%
71	1732	0	0	0	90	315	0%	0%	0%	5%	18%
72	933	0	0	0	80	320	0%	0%	0%	9%	34%
73											
74	5763	0	0	0	0	225	0%	0%	0%	0%	4%
75	2263	0	0	0	101	315	0%	0%	0%	4%	14%
76	1828	0	0	0	180	470	0%	0%	0%	10%	26%
77	1013	0	0	0	75	190	0%	0%	0%	7%	19%
78	1013	0	0	0	75	190	0%	0%	0%	7%	19%

Ballee Island

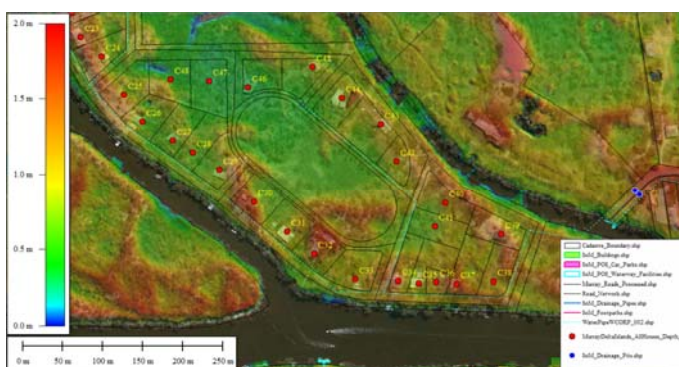
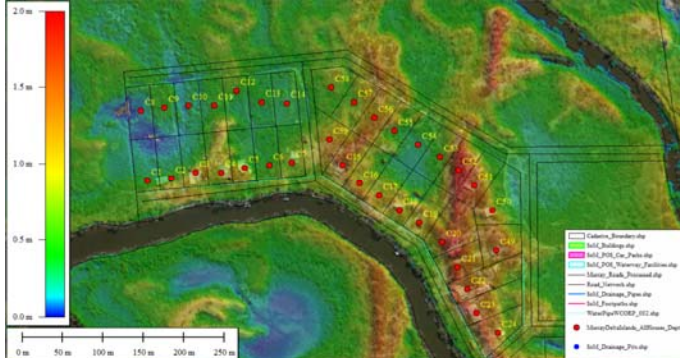


Yunderup Island



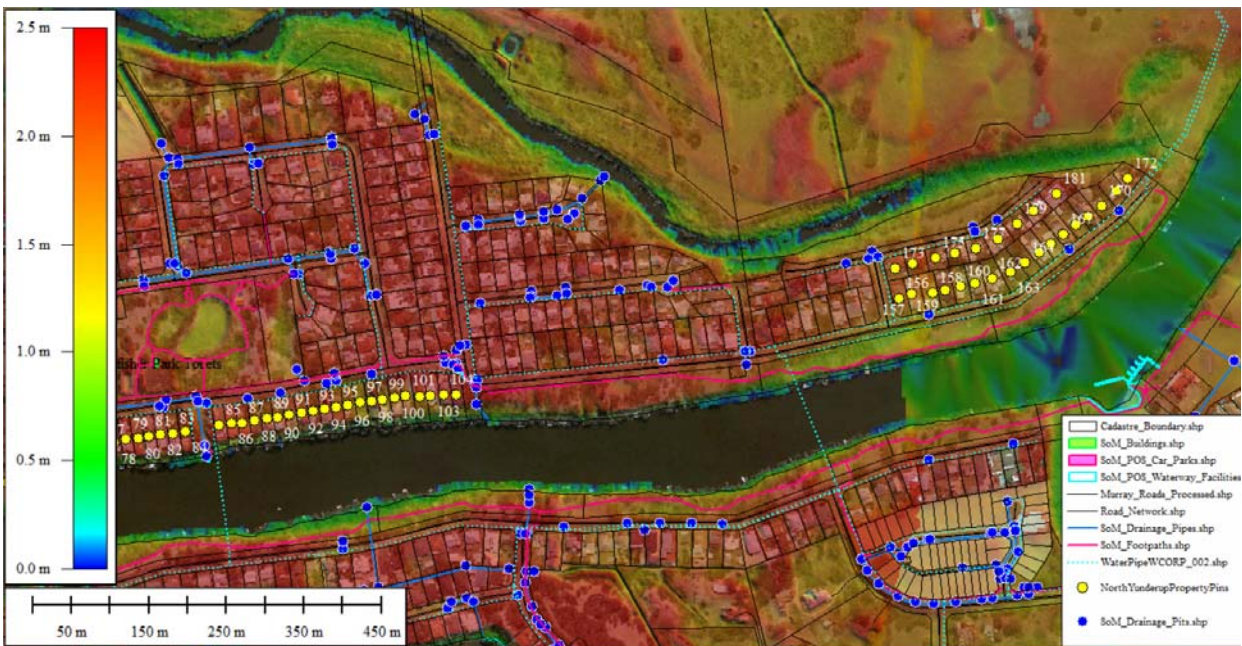
- Calabria_Boundary.shp
- Soil_Buildup.shp
- Soil_POI_Cat_Parks.shp
- Soil_POI_Waterway_Facilities.shp
- Manure_Bank_Processed.shp
- Road_Servicesh.shp
- Soil_Drainage_Pipes.shp
- Soil_Forepaths.shp
- ManurePOI0002_002.shp
- ManureData(Geoc_Alt)Name_Depth
- Soil_Drainage_Pins.shp

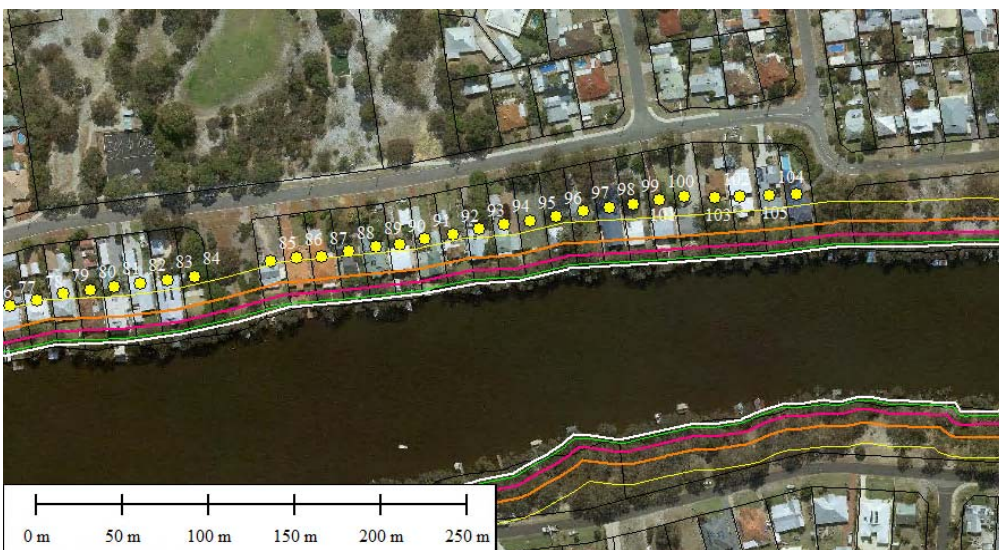
Coolerup Island



- Calabria_Boundary.shp
- Soil_Buildup.shp
- Soil_POI_Cat_Parks.shp
- Soil_POI_Waterway_Facilities.shp
- Manure_Bank_Processed.shp
- Road_Servicesh.shp
- Soil_Drainage_Pipes.shp
- Soil_Forepaths.shp
- ManurePOI0002_002.shp
- ManureData(Geoc_Alt)Name_Depth
- Soil_Drainage_Pins.shp

North Yunderup





Furnissdale

