

# Project Amendments

## Huntly-Pinjarra Environmental Assessment

### Refining our project footprint

Since referring the Huntly-Pinjarra Environmental Assessment to State and Commonwealth regulators in mid-2020 several amendments to our Proposal have been made to address potential impacts identified through our studies and engagement.

Amendments are common for a project of this nature and allow us to respond to issues and opportunities identified, including through community and stakeholder consultation.







The following amendments were recently submitted to the regulators and will deliver a range of improved environmental and social outcomes.

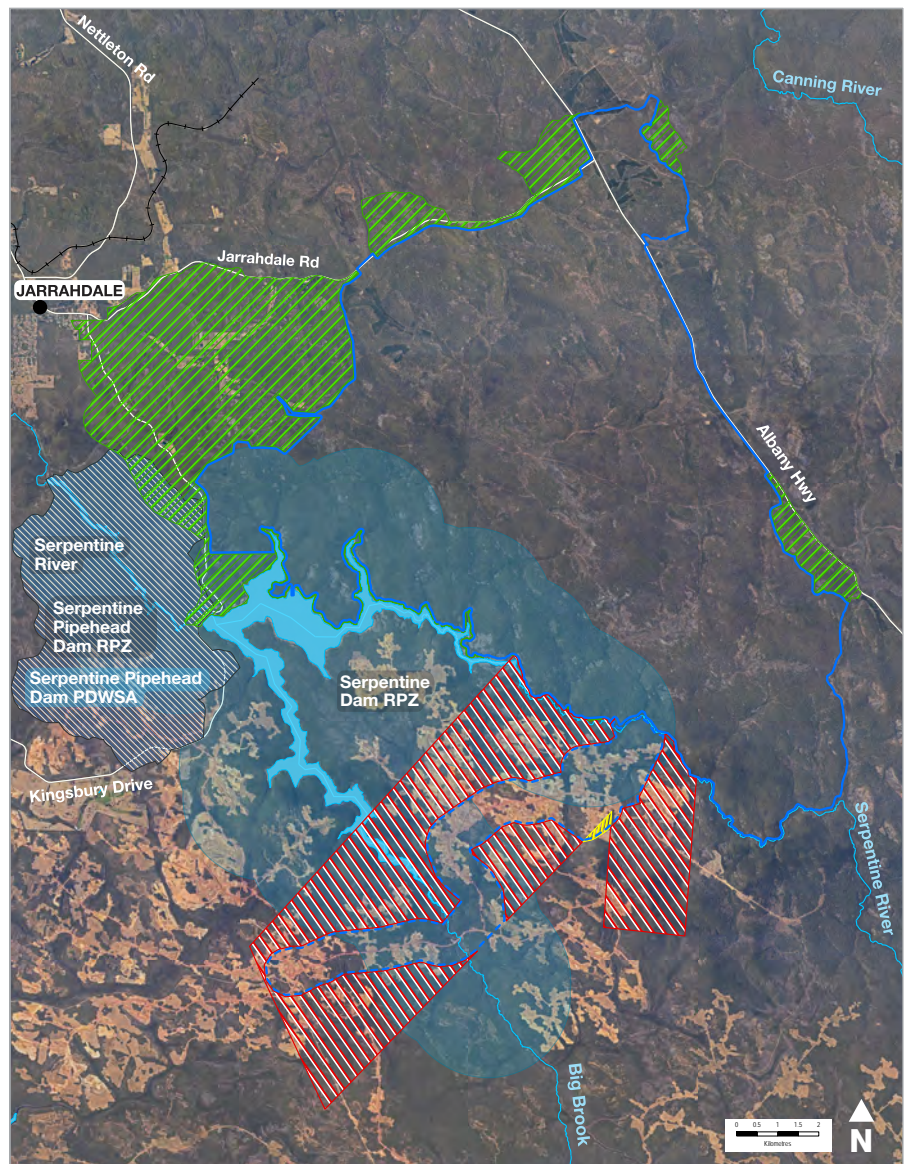
### Myara North Development Envelope

Through reductions in the size of the mine area and the infrastructure corridor, our proposed amendments in Myara North will decrease the total Development Envelope by 7,300 hectares, reducing it to 15,403 hectares.

These changes will reduce potential environmental and social impacts including avoiding the Serpentine Pipehead Dam Public Drinking Water Source Area.

<b>Clearing</b>	Reduced by <b>950ha</b>
<b>Distance between Jarrahdale and mining</b>	Increased from 1.4km to <b>5.3km</b>
<b>Infrastructure Corridor</b>	Reduced by <b>3,599ha</b>

Legend	
	Reservoir Protection Zone (RPZ)
	Proposed Mine Region
	Proposed mining avoidance zones
	Proposed Infrastructure Corridor
	Area removed from proposed infrastructure corridor
	Area added to proposed infrastructure corridor
	Serpentine Pipehead DAM PDWSA



## Holyoake Development Envelope

The proposed Holyoake Development Envelope amendment will remove a **519 hectare** parcel from the western-end of the infrastructure corridor and add the equivalent size parcel further east.

This change reduces our footprint near South Dandalup Dam and moves proposed mining infrastructure further away from Dwellingup and the reservoir.

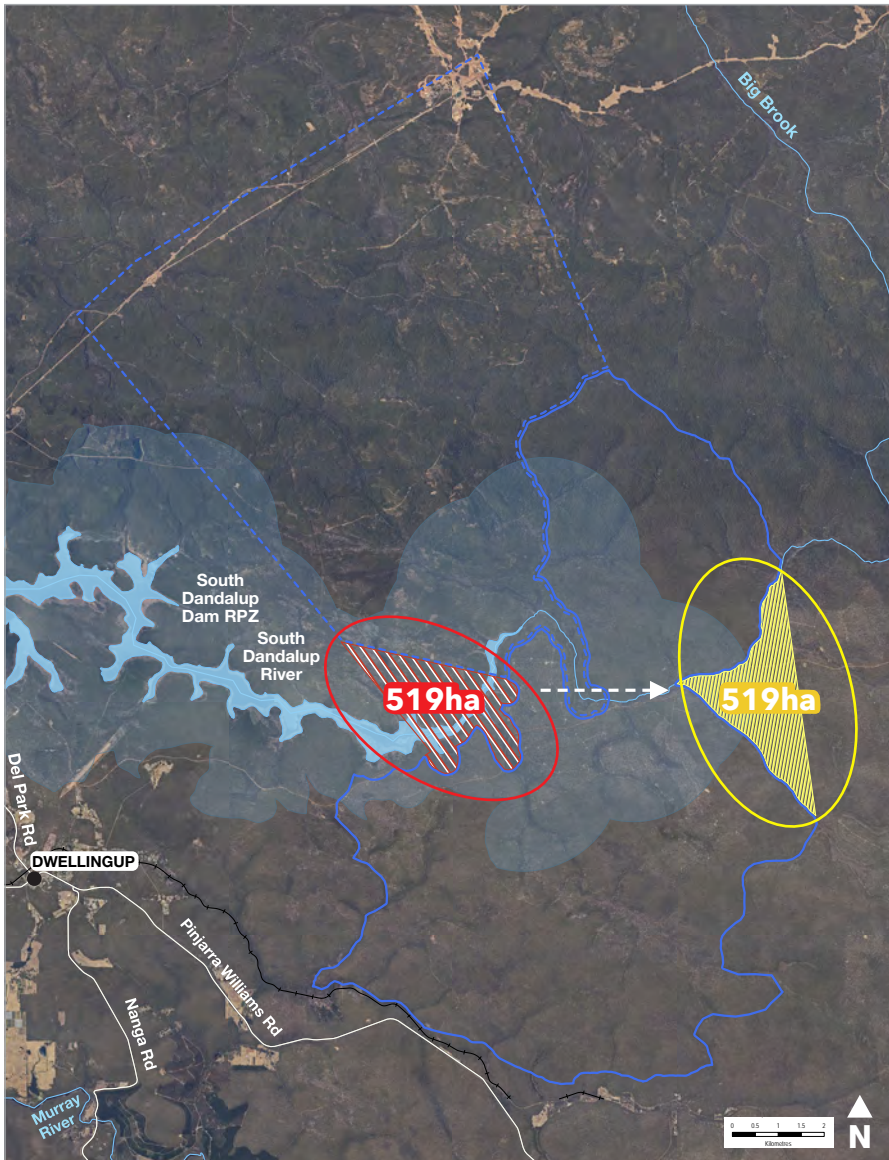
## Operating in Reservoir Protection Zones

Reservoir Protection Zones (RPZ) are defined by the Department of Water and Environmental Regulation to help ensure public drinking water sources are protected.

Only approved activities are permitted in these areas.

We have stringent processes in place to ensure that our operations in the RPZ are undertaken safely and responsibly.

Alcoa has a 60-year history of mining bauxite in WA without having any negative impact on public drinking water supply and we are committed to ensuring this continues.



### Legend

- Reservoir Protection Zone (RPZ)
- Proposed Mine Region
- Proposed Infrastructure Corridor
- Area removed from proposed infrastructure corridor
- Area added for infrastructure corridor



## Bauxite export withdrawn

We have withdrawn the export of up to 2.5 Million tonnes per annum of bauxite from the assessment as it is no longer part of our business plans.

This decision means all bauxite mined will continue to be refined at our three WA refineries, supporting local jobs and economies.